

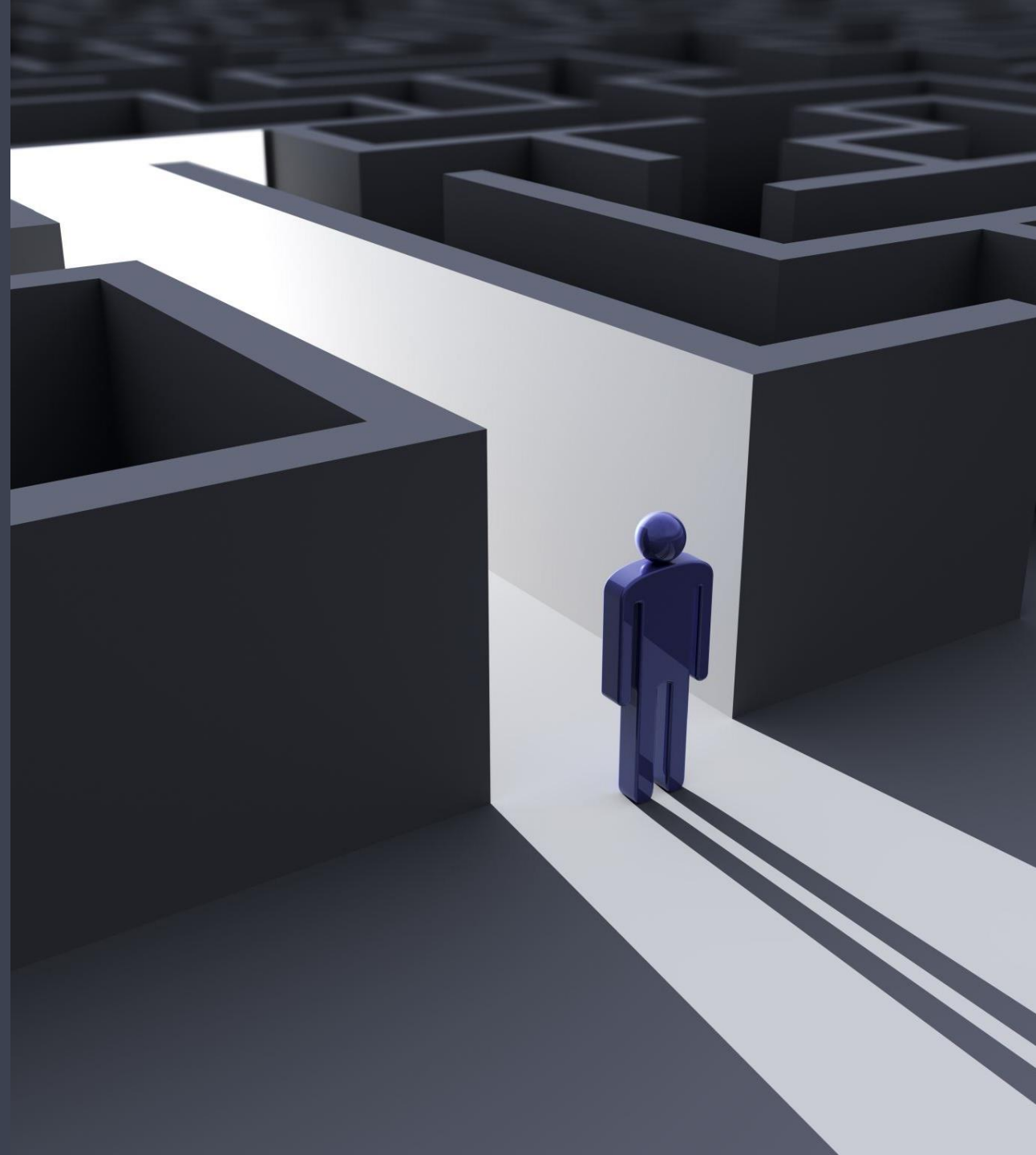
# Spark internship at Swiss Re Asset Management

# About Swiss Re Group

The Swiss Re Group is one of the world's leading providers of reinsurance, insurance and other forms of insurance-based risk transfer, working to make the world more resilient. The aim of the Swiss Re Group is to enable society to thrive and progress, creating new opportunities and solutions for its clients.

Our vision

„We make the world  
more resilient“





# About our Department

The Asset Management (AM) function handles the assets that Swiss Re generates through its core insurance and reinsurance businesses. We do so by using a robust asset-liability management process. In addition to matching assets and liabilities, our team optimizes risk-adjusted investment returns within defined risk limits. Our clients are the Business Divisions, Reinsurance, Corporate Solutions and iptiQ. Their portfolios are handled individually according to their needs and objectives.



# Why your students should apply?

...because they will have a unique opportunity to experience...



Asset Management in Reinsurance Company



International Company



Hands-on Practical Experience



Professional Network



Collaborative Environment



Interactive Workshops

# Spark internship at Swiss Re Asset Management

This unique experience offers 6 university students the opportunity to participate in an exclusive 2 semester (up to 20 hours a week) internship program covering the Asset Management field. In addition to Asset Management exposure, in this internship students will be able to participate on multiple sessions and trainings led by our Asset Management leaders across various fields both directly and indirectly touching the Asset Management operations. To conclude the programme, each intern will have the opportunity to contend for a final, permanent role within our organization.



We are searching for ...

**6 students**



Starting as of... till ...

**Sep 2022 – May 2023**



Joining us for ...

**9 months**

About the  
opportunity...

# Spark internship at Swiss Re

## List of internal Swiss Re contacts

Peter Znášik	Email: <a href="mailto:Peter_Znasik@swissre.com">Peter_Znasik@swissre.com</a>
Jakub Viater	Email: <a href="mailto:Jakub_Viater@swissre.com">Jakub_Viater@swissre.com</a>
Daša Balajová	Email: <a href="mailto:Dasa_Balajova@swissre.com">Dasa_Balajova@swissre.com</a>





## Legal notice

©2022 Swiss Re. All rights reserved. You may use this presentation for private or internal purposes but note that any copyright or other proprietary notices must not be removed. You are not permitted to create any modifications or derivative works of this presentation, or to use it for commercial or other public purposes, without the prior written permission of Swiss Re.

The information and opinions contained in the presentation are provided as at the date of the presentation and may change. Although the information used was taken from reliable sources, Swiss Re does not accept any responsibility for its accuracy or comprehensiveness or its updating. All liability for the accuracy and completeness of the information or for any damage or loss resulting from its use is expressly excluded.